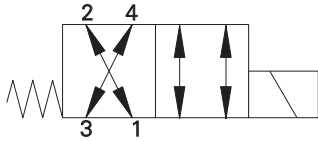


SV17A/B-10-4P - Solenoid Valve

4-way, 2-position, spool type solenoid valve
 17 L/min (5 USgpm) • 350 bar (5000 psi)

A



Operation

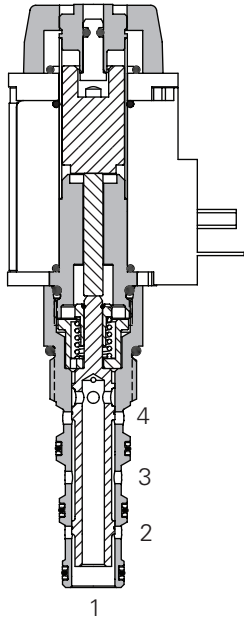
In the de-energized position this valve allows flow between port 3 to port 4 and between port 2 to port 1 in both directions.

In the energized position flow is allowed between port 3 to port 2 and between port 4 to port 1 in both directions.

Features

Hardened, ground and honed working parts to limit leakage. IP69K Tough coil compatibility. Continuously rated. Compact design with low pressure drop. Rated pressure on all ports. Working pressure 350 bar.

Sectional View



Performance

Ratings and Specifications

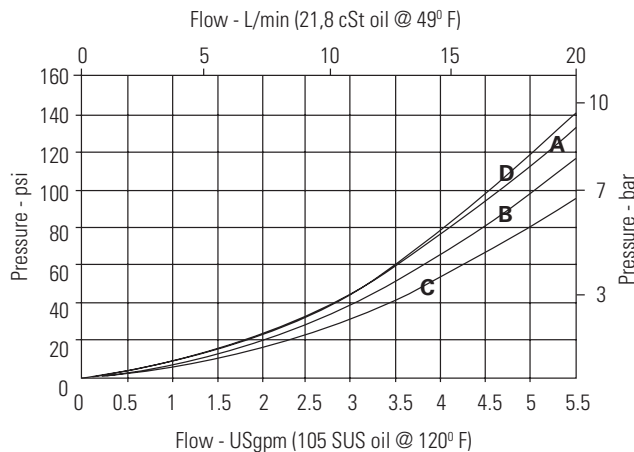
Performance data is typical with fluid at 21,8 cSt (105 SUS) and 49°C (120°F)

Typical application pressure (all ports except port 1)		350 bar (5000 psi)
Typical application pressure at port 1		210 bar (3000 psi)
Cartridge fatigue pressure (infinite life)		350 bar (5000 psi)
Rated flow	SV17A-10-4	17 L/min (5 USgpm)
	SV17B-10-4	23 L/min (6 USgpm)
Internal leakage		350 cc/min (21.5 in3/min) @ 210 bar (3000 psi)
Temperature range		-40° to 120°C (-40° to 248°F)
Coil duty		Continuous from 85% to 110% of nominal voltage
Cavity		C-10-4
Fluids		All general purpose hydraulic fluids such as: MIL-H-5606, SAE 10, SAE 20, etc.
Filtration Cleanliness code		18/16/13
Standard housing materials		Steel
Weight including coil	SV17A-10-4	0.44 kg (0.96 lbs)
	SV17B-10-4	
Seal kit		889625 Buna-N), 566080 (Viton® Viton is a registered trademark of E.I. DuPont

Description

This is a 4-way 2-position, direct acting, high pressure, spool type solenoid valve. This valve can be used in applications where the motion of a double acting cylinder or a motor needs to be reversed.

Pressure Drop



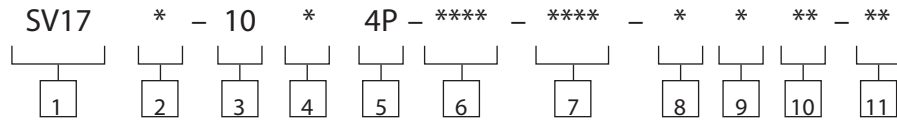
- A - Port 3 to port 2 energized
- B - Port 3 to port 4 de-energized
- C - Port 2 to port 1 de-energized
- D - Port 4 to port 1 energized

Where measurements are critical request certified drawings. We reserve the right to change specifications without notice.

SV17A/B-10-4P - Solenoid Valve

4-way, 2-position, spool type solenoid valve
17 L/min (5 USgpm) • 350 bar (5000 psi)

Model Code



1 Function
SV17 - Solenoid valve

2 Max Flow
A - 17 L/min (5 USgpm)
B - 23 L/min (6 USgpm)

3 Size
10 - 10 Size

4 Seal Material
Blank - Buna-N
V - Viton*

5 Style
4P - 4 way push type
manual override

6 Port Size

Code	Port Size	Housing Number	
		Aluminium	Steel
0	Cartridge only		
A2G	1/4" BSPP	02-185804	
A3G	3/8" BSPP	02-185805	
A6H	SAE 6	02-185802	
A8H	SAE 8	02-185803	
S2G	1/4" BSPP		02-175139
S3G	3/8"		02-175140
S6T	SAE 6		02-175137
S8T	SAE 8		02-175140

7 Voltage Rating

00 -	No coil
12D -	12VDC
24D -	24VDC
12B -	12VDC/w diode*
24B -	24VDC/w diode*

*Optional arc suppression diode.

8 Connector Types

Blank -	No coil
G -	ISO 4400 DIN 43650
W -	Flying lead (DC only)
C -	Deutch on Leads
H -	Metripak 150 on Leads
F -	Weatherpak Male on Leads

Forcoilpartnumbersanddimensions see section C.

9 Coil Types

Blank - No coil
L - L series (30W EN 490) used for SV17A-10
R - R series (30W) used for SV17B-10

10 Coil Special Features

Blank - No coil
00 - No special feature

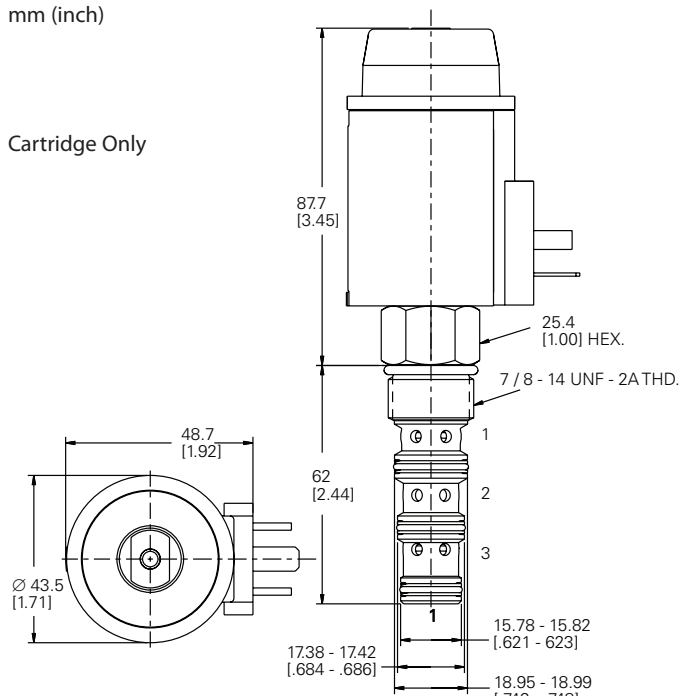
11 Special Features

00 - None

Dimensions

mm (inch)

Cartridge Only

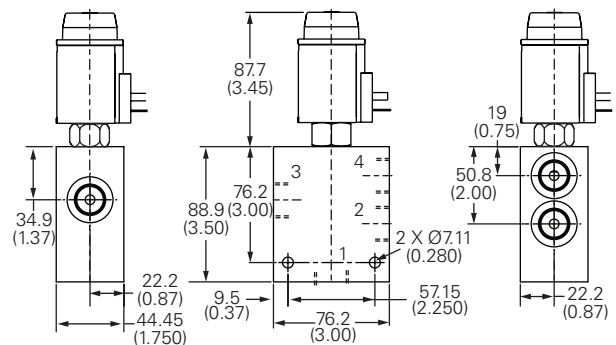


Torque cartridge in aluminum housing 47-54 Nm (35-40 ft. lbs)

Torque cartridge in steel housing 68-75 Nm (50-55 ft. lbs)

Note: When solenoid valve is ordered as cartridge only, coil nut is included.

Installation Drawing (Steel)



WARNING
Maintain 2.5-3 Nm (1.8-2.2 ft. lbs) maximum torque on valve tube nut. Over tightening may cause valve failure.

WARNING
Aluminum housings can be used for pressures up to 210 bar (3000 psi). Steel housings must be used for operating pressures above 210 bar (3000 psi).