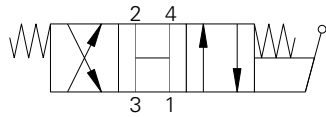


MLV9-12-B - Directional Valve

Manual lever valve, spool

60 L/min (15.9 USgpm) • 210 bar (3000 psi)



Operation

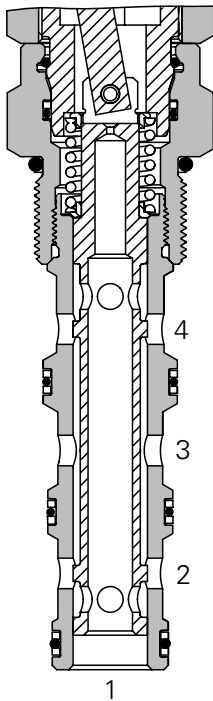
In the center position, all ports are open to each other. In position 1, flow is directed from port 3 to port 4 and from port 2 to port 1.

In position 2, flow is directed from port 3 to port 2 and from port 4 to port 1.

Features

Hardened, ground and honed working parts to limit leakage and prolong life. Compact design with a low pressure drop. Handle position fully adjustable.

Sectional View



Performance Data

Ratings and Specifications

Performance data is typical with fluid at 21,8 cST (105 SUS) and 49°C (120°F)

Typical application pressure (all ports)	210 bar (3000 psi)
Cartridge fatigue pressure (infinite life)	210 bar (3000 psi)
Fatigue pressure	(210 bar) 3,000 psi per NFPA/T2-6-1 R2-2000
Rated burst pressure	(626 bar) 9090 psi per NFPA/T2-6-1 R2-2000
Max flow	60 L/min (15.9 USgpm)
Temperature range	-40° to 120°C (-40° to 248°F)
Cavity	C-12-4
Fluids	All general purpose hydraulic fluids such as: MIL-H-5606, SAE 10, SAE 20 etc.
Filtration	Cleanliness code 18/ 16/13
Standard housing materials	Aluminum
Weight	.57 kg (1.25 lbs)
Seal kit	9900171-000 (Buna-N), 9900172 (Viton®)
Internal leakage	246 cm ³ /min (15 in ³ /min) max. @ 210 bar (3000 psi)

Endurance tested to 1 million cycles at full rated flow and pressure

Viton is a registered trademark of E.I. DuPont

Description

This is a lever operated 4 way 3 position direct acting spool type directional valve. Spring centered with all ports open. This valve can easily be installed into a manifold simplifying the design and removing leak points.

Pressure Drop

