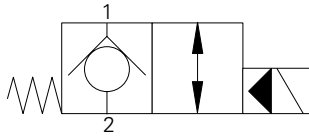


SV3-8-C/CM - Solenoid Valve

Poppet type, normally closed solenoid valve
23 L/min (6 USgpm) • 210 bar (3000 psi)



Operation

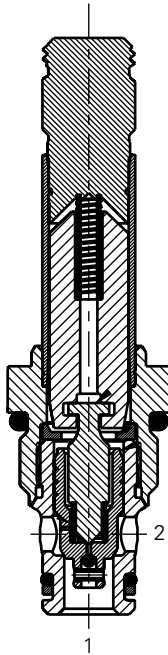
In the de-energized position the valve blocks flow from port 2 to 1 and free flow is allowed from port 1 to 2.

When the solenoid is energized the pilot poppet is pulled off the seat allowing the valve to open in both directions.

Features

Hardened and ground working parts. Lapped seat for low leakage. IP69K Tough coil compatibility. Continuously rated. Compact design with low pressure drop.

Sectional View



Performance Data

Ratings and Specifications

Performance data is typical with fluid at 21,8 cSt (105 SUS) and 49°C (120°F)

Typical application pressure (all ports)	210 bar (3000 psi)
Cartridge fatigue pressure (infinite life)	210 bar (3000 psi)
Rated flow	23 L/min (6 USgpm)
Internal leakage	less than 5 drops/min @ 210 bar (3000 psi)
Coil duty	Continuous from 85% to 110% of nominal voltage
Response times (100% rated voltage and flow)	Energize: 18 ms De-Energize: 46 ms
Temperature range	-40° to 120°C (-40° to 248°F)
Cavity	C-8-2
Fluids	All general purpose hydraulic fluids such as: MIL-H-5606, SAE 10, SAE 20 etc.
Filtration	Cleanliness code 18/16/13
Housing material (standard)	Aluminum
Weight including coil	0,28 kg (0.62 lbs)
Seal kit	02-165875 (Buna-N), 02-165877 (Viton®)

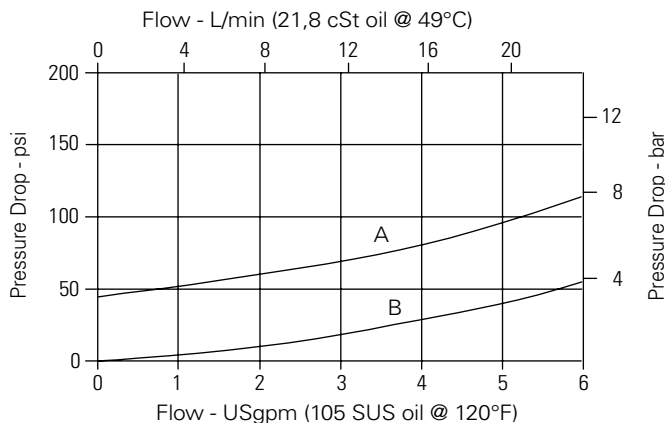
Viton is a registered trademark of E.I. DuPont

Description

This is a 2-way, 2-position, poppet type, pilot operated, normally closed solenoid valve. This valve is used in applications requiring low leakage, such as load holding applications or as a general purpose diverter or dump valve.

Pressure Drop

Cartridge only



A - Port 1 to port 2 de-energized

B - Port 2 to port 1 energized

SV3-8-C/CM - Solenoid Valve

Poppet type, normally closed solenoid valve

23 L/min (6 USgpm) • 210 bar (3000 psi)

Model Code

SV3	- 8	(V)	- C	(M)	(F)	- (A)	**	- ****	*	S	- 00
1	2	3	4	5	6	7	8	9	10	11	12

1 Function

SV3 - Solenoid valve

2 Size

8 - 8 size

3 Seal Material

Blank - Buna-N
V - Viton®

4 Style

C - Normally closed

5 Manual Override Option

Blank - No manual override
M - Knob type

For valve dimensions with manual override option installed see page A-980.

6 Filter Option

Blank - None
F - Filter screen

8 Port Size

Code	Port Size	Housing Number
0	Cartridge only	
2G	1/4" BSPP	02-160727
3G	3/8" BSPP	02-160728
4T	SAE 4	02-160730
6T	SAE 6	02-160731
8T	SAE 8	02-160732

See section J for housing details.

9 Voltage Rating

00 - No coil
12D - 12VDC
24D - 24VDC
36D - 36VDC

7 Valve Housing Material

Omit for cartridge only
A - Aluminum

10 Connector Types

Blank - No coil
G - ISO 4400 DIN 43650
Q - Spade terminals
W - Flying lead
N - Deutsch (DC only)
Y - Amp JR (DC only)
D - Metripack 150 male (DC only)
J - Metripack 280 male (DC only)

11 Coil Series

S - 8 series, 20 W
For coil part numbers and dimensions see section C.

12 Special Features

00 - None
(Only required if valve has special features, omitted if "00".)

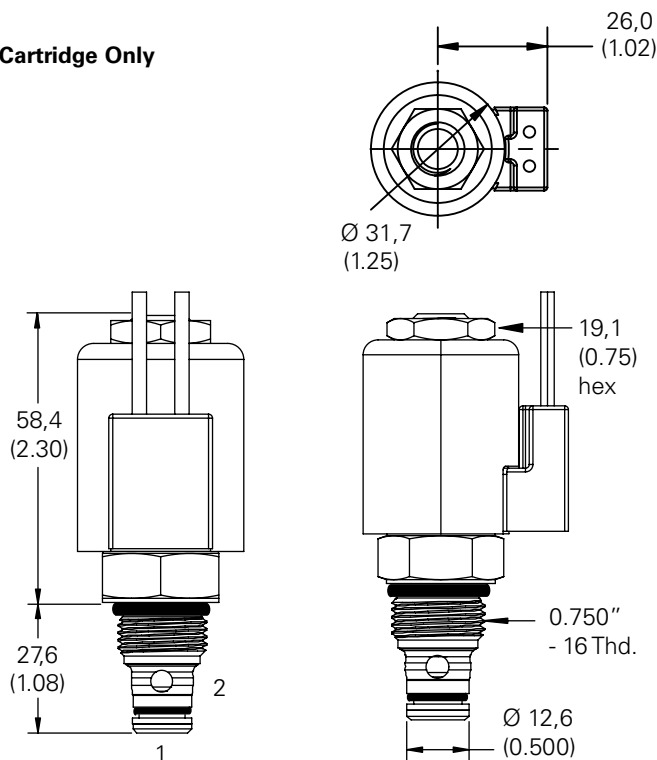
Dimensions

mm (inch)

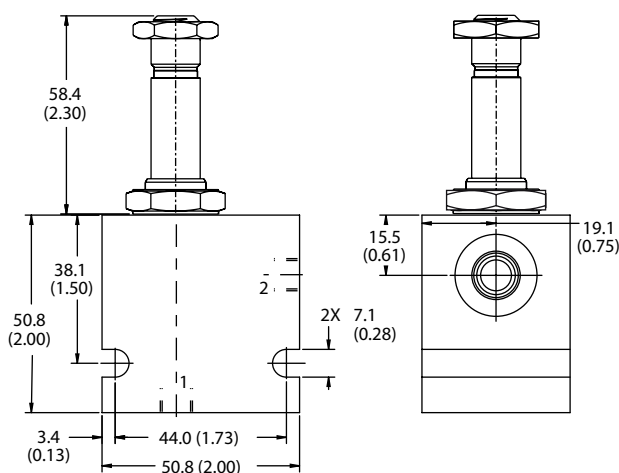
Torque cartridge in aluminum housing 34-41 Nm (25-30 ft lbs)

Note: When solenoid valve is ordered as cartridge only, coil nut is included.

Cartridge Only



Installation Drawing



WARNING

Maintain 5-8 Nm (4-6 ft lbs) maximum torque on valve tube nut. Over tightening may cause valve failure.

Where measurements are critical request certified drawings. We reserve the right to change specifications without notice.